

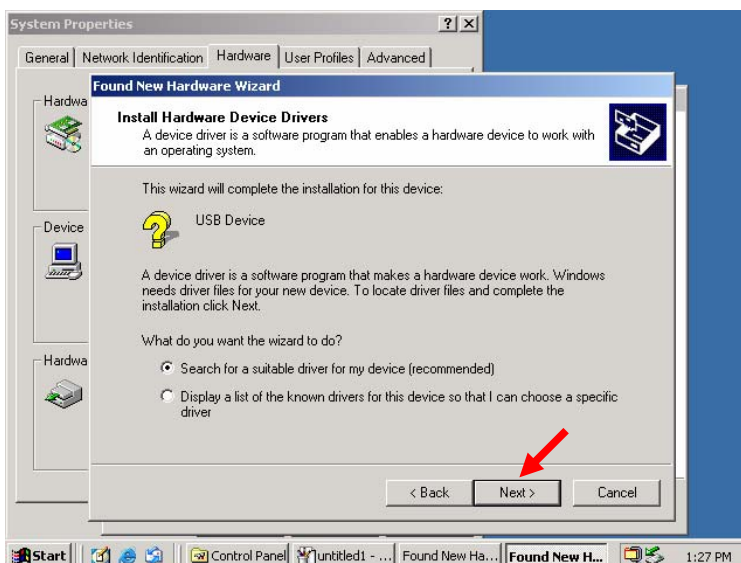
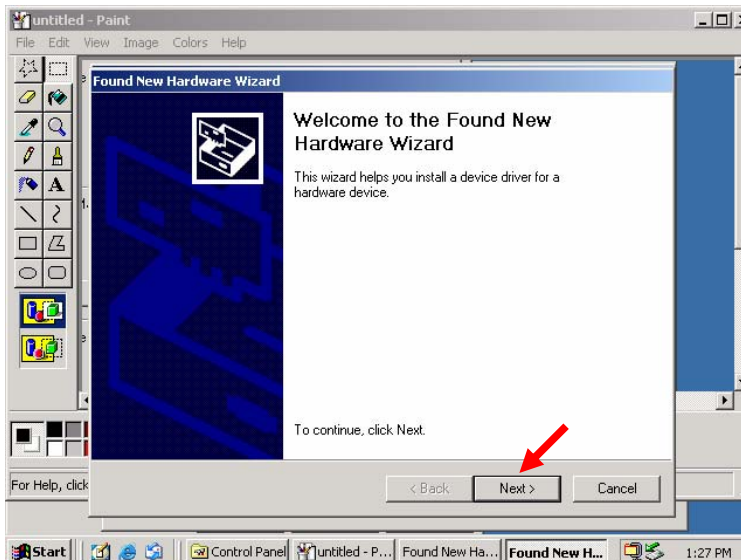
# USB GPS Receiver user's Guide

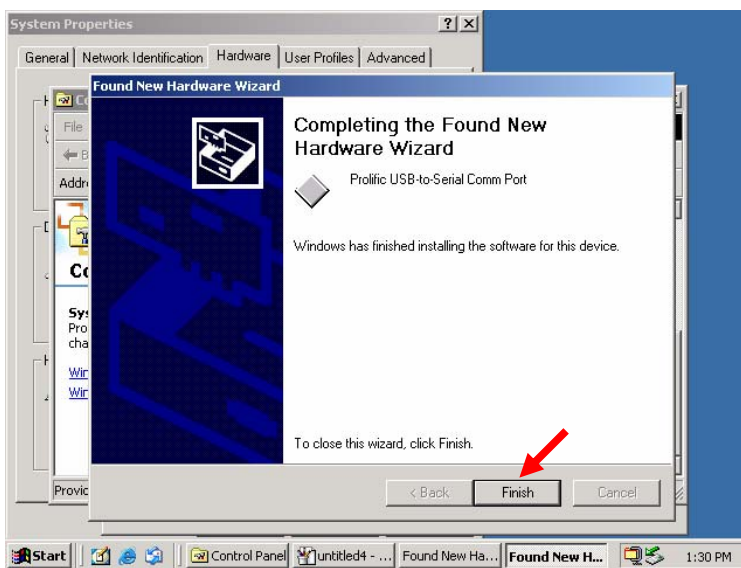
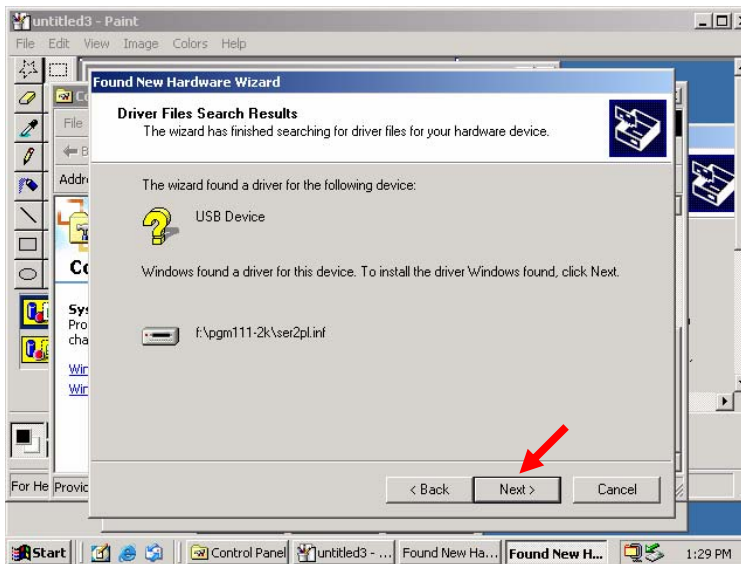
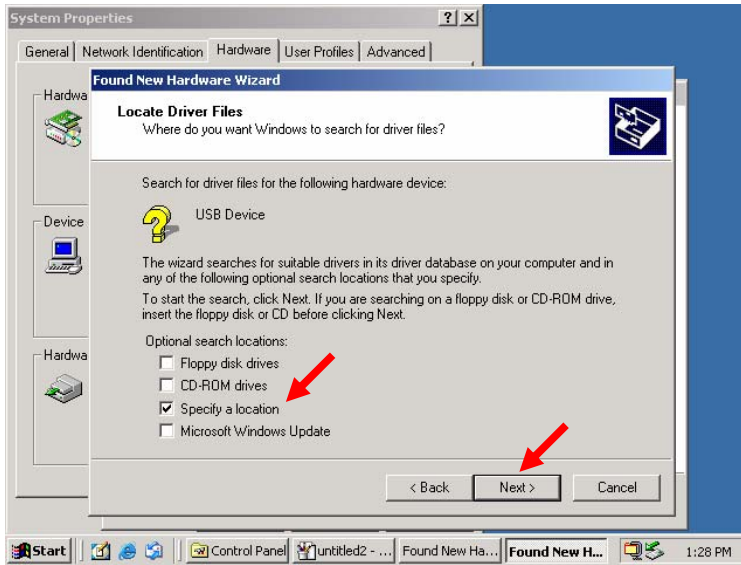
## 1. System Requirements

- a. CPU IBM, Pentium or compatible PC
- b. Memory 32 M Byte
- c. System Microsoft® Windows® 98/ME/2000/XP
- d. Graphic Adaptor VGA

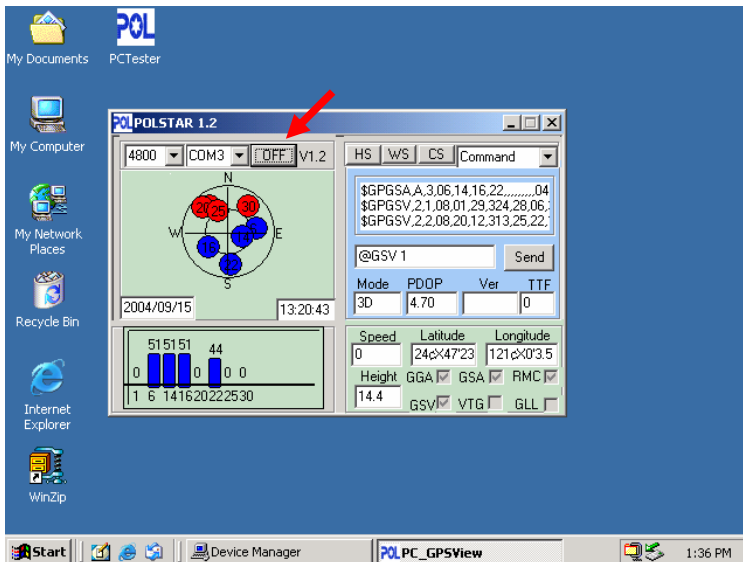
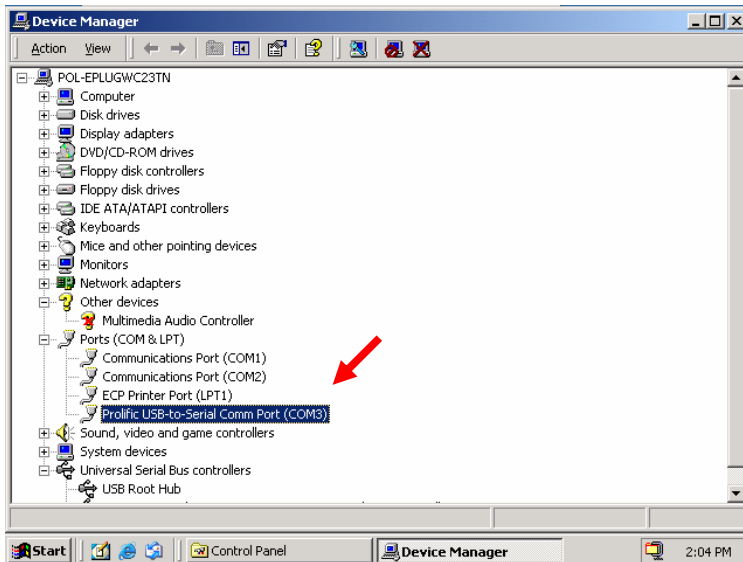
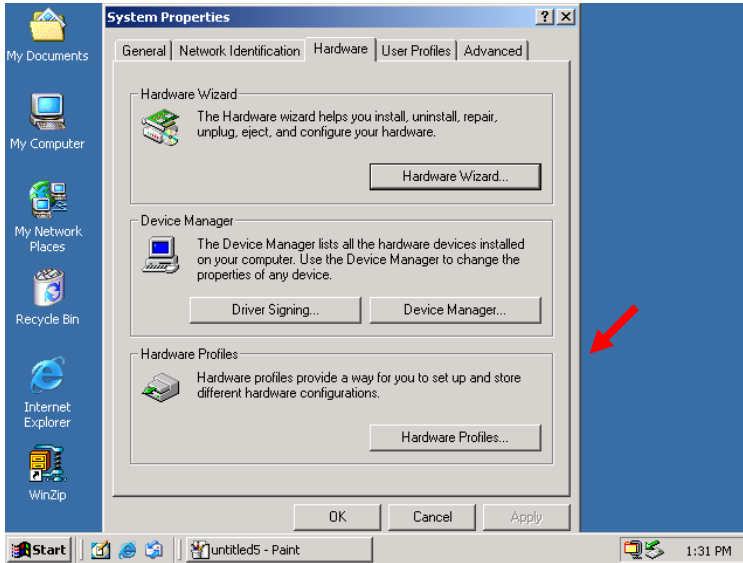
## 2. USB Driver Installation

- a. Download the <USB Driver> zip file from [www.polstargps.com](http://www.polstargps.com) website to hard disk. And unpack the files.
- b. Connect GPS Receiver USB connector to computer. Computer will detect the new device, and then starts the installation program, please direct the driver to the <USB Driver> folder for driver.





- c. After the installation is complete, go to <Device Manager> and select <Ports (COM & LPT) > to verify if a virtual COM port <USB to Serial Port> was created.





### **3. After Installation**

Verify the COM port # to start using your own navigating software.

- a. Click <Start> menu, select <Settings>, then enter <Control Panel>.
- b. After entering <Control Panel>, select <System>.
- c. Select <Device Manager>, find the <Universal Serial Bus Controller> and check the Virtual COM Port, which was created by the USB driver, i.e. USB to Serial Port (COM #). Please note that the Virtual COM Port number might be different from every computer.

Note!! Before using navigation software, please confirm the COM Port numbers created by your computer and provided by your navigation software. Otherwise, the navigating software won't receive the satellite signal, because of the un-match COM Port setting.

### **4. PC testing tool**

Download PC testing tools from [www.polstargps.com](http://www.polstargps.com). Then you can run the testing program to test if the GPS is working well.